



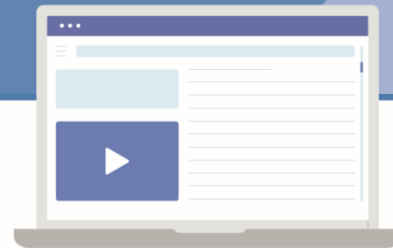
Your wellbeing matters. We have signed up to the Education Staff Wellbeing Charter to:



Prioritise staff mental health



Give staff the support they need to take responsibility for their own and others' wellbeing



Give managers access to the tools and resources they need to support the wellbeing of those they line manage



Establish a clear communications policy



Give staff a voice in decision-making



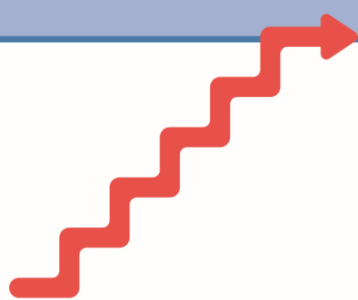
Drive down unnecessary workload



Champion and enable flexible working



Create a good behaviour culture



Support staff to progress in their careers



Include a sub-strategy for protecting leader wellbeing and mental health



Hold ourselves accountable, including by measuring staff wellbeing

Education Staff Wellbeing Charter
For more information: www.gov.uk/dfe



Department
for Education