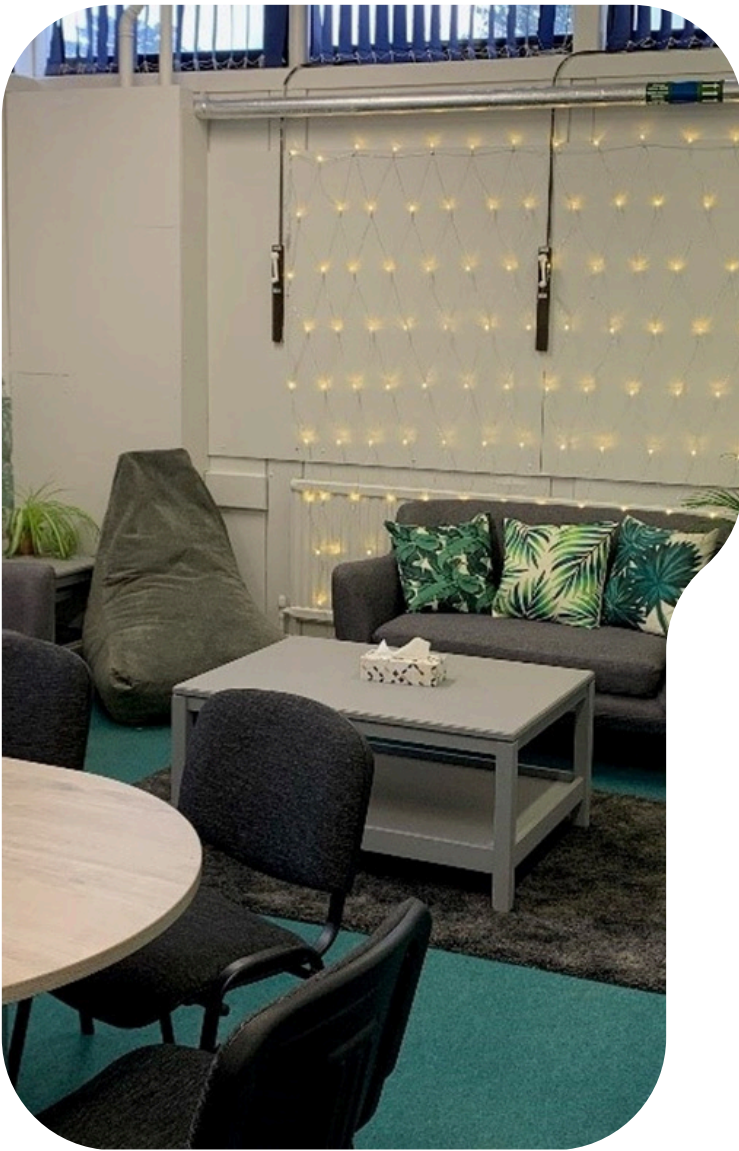




# Inspiring Futures Fund

The *Inspiring Futures Fund* is maintained by voluntary contributions from parents. It provides vital additional funds to invest in our facilities and educational resources, for the benefit of all our students.



### **Our Wellbeing Hub**

We have transformed a small classroom into a dedicated Wellbeing Hub, which is now used for individual and group sessions with students, and hosts a number of clubs and societies. It is the perfect place to go if students need extra pastoral support.

### **A Welcoming Reception**

Improving the school environment was a key priority last year, with a focus on celebrating the achievements of our students. Our Reception area has been redecorated, with canvas prints showcasing our students and their many talents. We would love to extend this to the rest of the school.

# Past Investments



## School improvement

We have refreshed classrooms with new paint and furniture and improved our student study areas, to inspire learning and create welcoming spaces.



## Sixth Form Refurbishments

The Sixth Form at Newlands is thriving, and we want to continue to improve our facilities for the students. The new Brewhouse Café was installed in the Sixth Form Centre last year and new furniture was added to the common room to create a superb learning environment for students.



## Outside Classroom

Our outside classroom allows students to learn in the natural environment, creating an inspiring location for summer lessons and to enrich students' learning experience.



# How To Support US



**We currently have two minibuses which are used everyday and are vital for taking students on educational outings, to sporting fixtures, for enrichment opportunities, and to facilitate our Sixth Form consortium arrangements.**

**Unfortunately, the lease comes to an end this year and we are looking to purchase both of them to keep these essential opportunities open for our students.**

**We are asking parents to sign up to the Inspiring Futures Fund and give a monthly amount which will help us to buy these vehicles.**

**We are also looking for company sponsorship from any parents who would be interested in having their businesses advertised on the side of a minibus.**

The *Inspiring Futures Fund* is supported through voluntary contributions from parents: all funds go directly to enhancing students' experience during their time at Newlands.

We would like to ask all parents to make a regular donation each month to help us maintain, strengthen and invest in the rich learning journey that we, as a school, have embarked upon with your daughter.

Our development plans for the year are expected to cost in the region of £100,000. With your support we can achieve this target: if the parents of every student were to make a monthly £10 contribution to the fund, we could purchase both of the minibuses and update areas of the school in much need of improvement. What a difference that would make!

You can make a regular donation by setting up a standing order using the form accompanying this booklet. Alternatively, you can use the Give a Little QR code to set up regular monthly payments from your bank account. Please complete the gift aid form so we can claim an additional 25% .



Newlands Girls' school  
Sort Code: 30 - 95 - 36  
Account Number: 5 9 6 3 9 3 6 8  
(please use your child's name as a reference)



**Thank you for supporting your daughter's educational journey with us.**