

Home learning pack

year 8 – Terms 1- 6

Term-1-2 – 3D Food

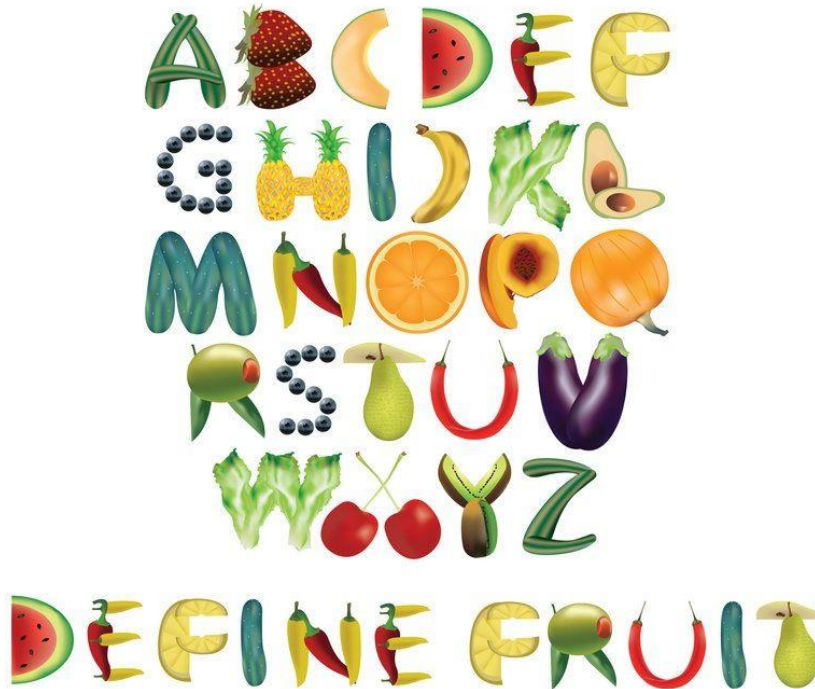
- Task 1: Food title page
- Task 2: Illustration recipe card
- Task 3: Tea-Time or Picnic mind-map
- Task 4: Artist Research – Pick between Claes Oldenburg or Peter Anton
- Task 5: Colour pencil observational drawing of food item from mind-map
- Task 6: Make your own food sculpture out of cardboard and paper.



Task One: Title Page

Create a title page. Write the title 'Food' in the centre of the page.

Use lettering that incorporates different types of food.

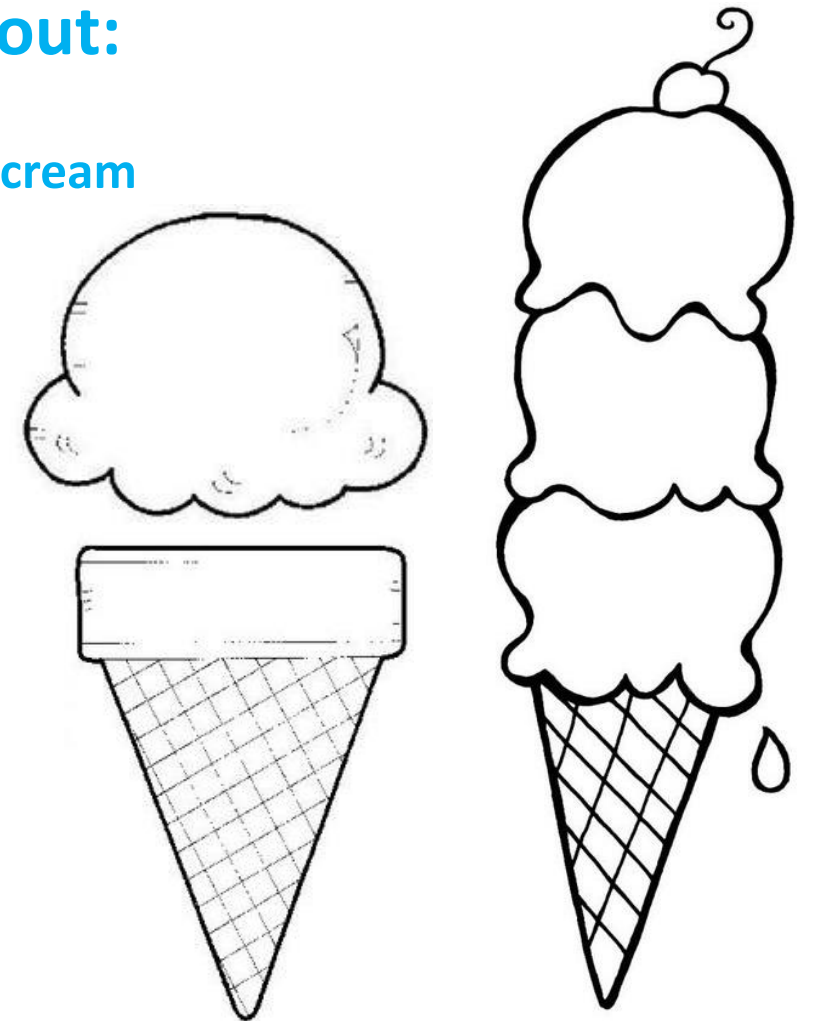




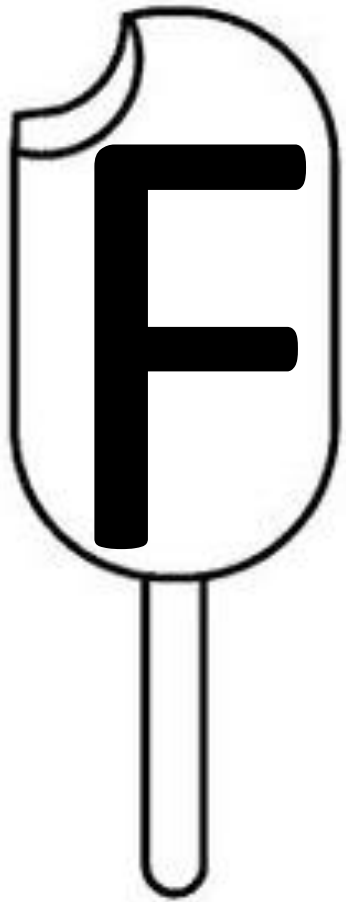
FOOD

Options to think about:

- Choice of font
- How many scoops of ice cream
- Soft serve or scoop
- Flavour



FOOD

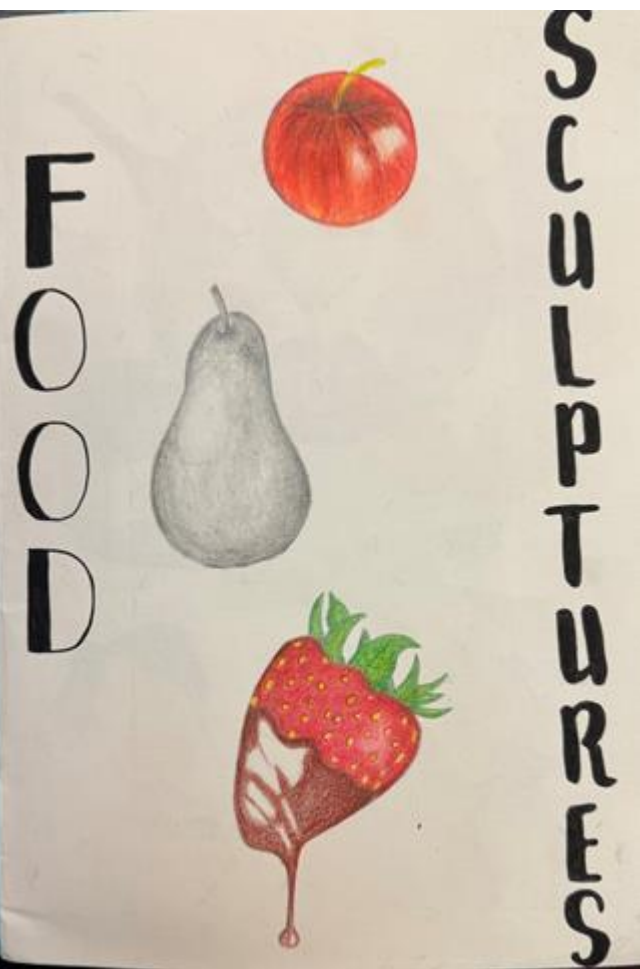


Options to think about:

- Choice of font
- How many scoops of ice cream
- Soft serve or scoop
- Flavour



Student Exemplars



Make a Recipe Card

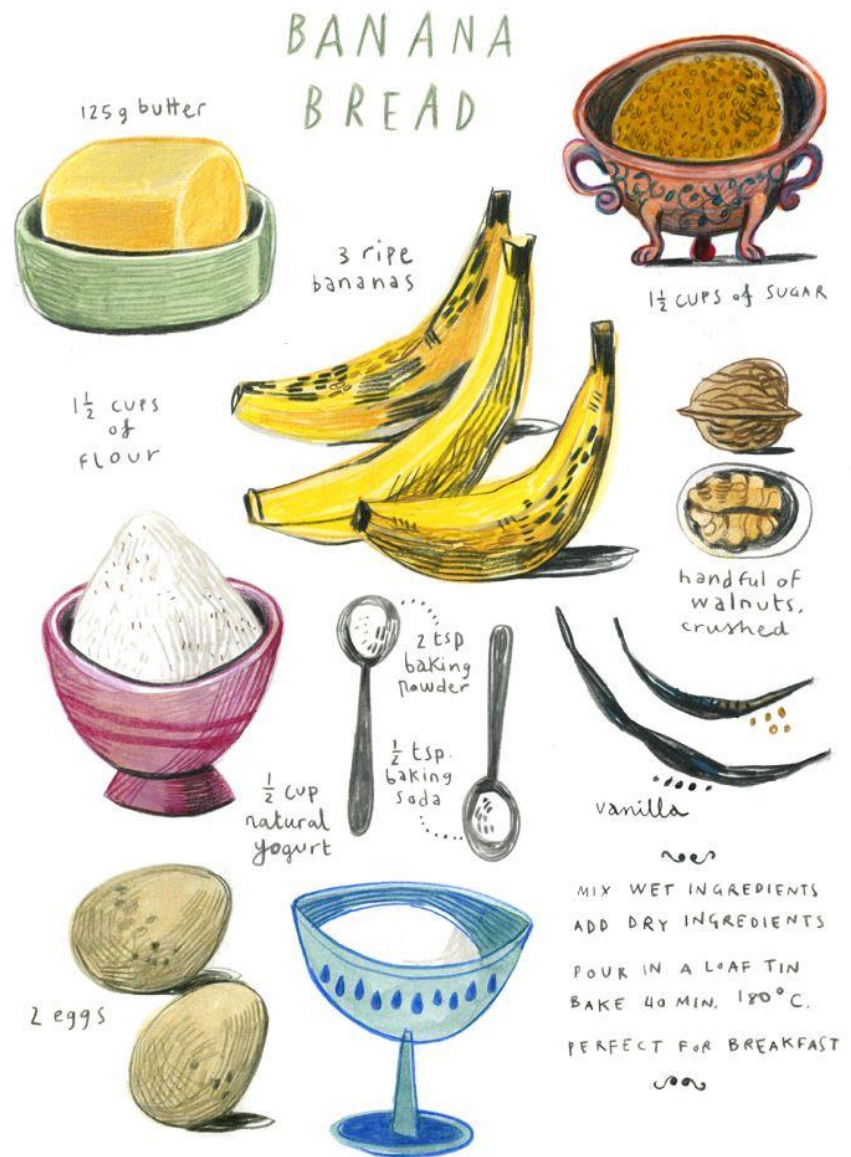
Add a recipe and illustrations, please find examples attached.

Task 2:

FELICITA * SALA

[felicitasala](https://www.felicitasala.com/food-illustration) Website

<https://www.felicitasala.com/food-illustration>



Maple Apple CAKE



1 1/2 CUP FLOUR
(SELF RAISING)

1 TEASPOON
cinnamon



2/3 CUP BROWN
SUGAR



3 RED
apples ← PEELLED
GRATED

2 eggs



1/3 CUP
maple
syrup



a pinch
of salt

175g BUTTER



- mix ingredients well
- bake in a loaf tin: 40-45m.
180°C.



• sprinkle with
cinnamon &
icing sugar



LAMINGTONS



1/2 CUP SOFT BUTTER



1 CUP OF
FINE
SUGAR



3 EGGS

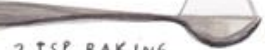


2 CUPS OF FLOUR

1 TBSP
VANILLA
ESSENCE



1/2 CUP OF
MILK



2 TSP BAKING
POWDER

icing



1/4 TSP SALT



3 1/2 CUPS
ICING
SUGAR

+
1/2 CUP
COCOA
POWDER



+
1/2 CUP OF MILK



2 TBSP BUTTER



2 CUPS OF DESICCATED
COCONUT

Winter Veg AND gnocchi BAKE

Wash veg, add to boiling water & boil for 3 mins

250g fresh gnocchi

ADD TO BOILING WATER & BOIL FOR 3 MINS

100ml cream or some butch

DRAIN, RETURN TO PAN & ADD CREAM

approx 2 tbsp parmesan cheese

approx 2 tbsp breadcrumbs

BAKE AT 180°C FOR 25-30 MINS UNTIL GOLDEN

Broccoli AND STILTON Soup

1 small potato PEEL & CHOP

1 onion WASH & SLICE

1 leek WASH & SLICE

SAUTÉ GENTLY UNTIL SOFT

1/2 liter veg stock

SIMMER FOR 15-20 MINS

BLEND, CRUMBLE IN CHEESE, & MELT

100g stilton

SERVE WITH CRUSTY BREAD

Rhubarb & ALMOND Muffins

MAKES 8

150g plain flour

1 dessert spoon baking powder

1 tablespoon ground almonds

pinch of salt

120ml milk

50g butter

75g sugar

1 egg

ROUGHLY 250g rhubarb (diced)

a sprinkle of flaked almonds

Bake at 180°C for 20-25 minutes

Courgette & ONION Bhajis

2 medium or 1 mega oversized courgettes (around 500g)

500g onions (peeled & sliced)

1 tsp salt

1 green chilli

2 tsp cumin seeds

2 tsp coriander seeds

GRIND

180g chickpea flour

180g dates

MIX WITH 2 TBSP WATER

SHALLOW/DEEP FRY IN SMALL BATCHES IN HOT OIL

Apple & DATE Squares

180g apple PEEL, CORE, CHOP

140g dates ROUGHLY CHOP

150g butter MELT

120g soft brown sugar

180g plain flour

120g oats

1 tsp bicarb of soda

SANDWICH BETWEEN THE OAT MIXTURE

BAKE AT 190°C FOR 30 MINS. ALLOW TO COOL BEFORE CUTTING INTO 9 SQUARES.

Squash & FETA Quesadillas

Squash PEEL, CORE & CHOP

ROAST FOR 30 MINS

tortilla wrap

feta cheese

FOLD & FRY OTHER SIDE

CUT INTO WEDGES

Student exemplars



Task 3 - Create a Mind-Map –

- After you and your team have decided on the theme 'Picnic' or 'Tea Party' , make an illustrate mind-map.
- Once you have made you mind-map with loads of sculptural food ideas, you will then work with you team to decide what you will make together.
- Make sure everyone will have a role to plan. Also decide on a team leader who will make sure everyone always has a job, overseeing the work.





The Picnic





The Tea Party



Student exemplar



Artist Research Task 4:

WHO?

Name
Date of birth
Nationality



WHAT

Describe one of the selected images by the artist.

HOW

How was the work made?

Artist Copy



Peter Anton



Claes Oldenburg



Choose one image to copy. Will you copy the whole image? Or a section? What are the best materials to use?

Claes Oldenburg or Peter Anton

FONT: The best titles link visually to the artist you are looking at.

Look up the **artist** and select images that link to your project. Print out the images yourself either using a computer at home or in school.

Plan out how you will present this in your sketch book.

Single page?
Double page?

Background?

Patterns?

Using coloured card?

Boarders?

WHY

Why do you think you have been asked to look at this work in connection to your own project? Do they use similar materials or is it a similar theme?

Oldenburg and Pop Art



Claes Oldenburg is a Swedish American sculptor, best known for his public art installations typically featuring very *large replicas of everyday objects*.

Oldenburg's work includes *food items* like ice cream cones, hamburgers and cakes; and *mass manufactured items* like lipsticks, needles, bicycles and fans.



Did you know?
These are other related careers to sculpture:

1. Architectural technologist
2. Design engineer
3. Product designer



He created *giant objects* made of cloth stuffed with paper or rags, which became known as “*soft-sculptures*”.

Peter Anton

Anton uses a combination of plaster, wood, metal, resin, clay, and acrylic to create his realistic sculptures. They look so real you can almost taste them!





**THE GREAT BRITISH
BAKE OFF**

[You WON'T BELIEVE what this burger is made out of! 😬 | The Great British Bake Off \(youtube.com\)](#)

Student exemplars

I think we have been asked to look at his work in relation to this project because what we are both doing is the same; creating 3D sculptures of food.

PETER ANTON

ARTISTS EVALUATION

I think that the products Peter Anton uses to create his pieces are probably made to be more sturdy than the ones we will make as they need to be strong enough for a museum.

Peter Anton is an American artist and sculptor. He was born in 1963 and grew up in New Haven, Connecticut. His art is mainly focused on food, especially sweet things like chocolates and donuts.

One of Peter Anton's most famous pieces "Heavenly assortment" is a large hand-crafted box of chocolates, made out of resin, metal, wood, clay and acrylic and oil paints. This includes a wide range of chocolates all shapes and sizes.

Peter Anton uses resin, metal, wood, clay and acrylic and oil paints to create his art.










Peter Anton

Who is Peter Anton?
Peter Anton is an American Sculptor and Artist. He was born in 1963 (age 53 years).


Some sculpting's by Peter Anton:

Artist Copy Macarons



Description of the image:
This image is of macarons stacked up in a tall pile. It varies in colours and Peter Anton has been able to recreate the crispy look of the macarons in his sculpture. They look very realistic and tasty!



How is his work made?
His sculptures are made by using a combination of plaster, wood, metal, resin, clay and acrylic to make his sculptures. In the macaron sculpture I guess he used clay, acrylics and plaster to create the realistic look. He did a great job of shaping the macarons as well.

Student exemplars

Clas

Clas Oldenburg was a Swedish-born American sculptor, who is best known for his public art installations, normally featuring very big replicas of food.

Clas was born in Stockholm, Sweden. He died July 18, 2022 (aged 93) in New York City in the U.S. He was educated in the Latin School of Chicago, Art Institute of Chicago and then on to Yale University.

Other themes of his work is soft sculpture version of everyday objects.

Clas uses materials such as cloth, foam, canvas, tinfoil, and paper, soft sculptures.

Oldenburg adopted a paper-mache technique that he found in a children's art book, using colored scraps of newspaper and wheat paste to make objects that he then splashed with black paint.

The art movement Clas makes is Pop art + modern art.

ARTIST COPY

APPLE CORE

OLDENBURG

I think what we have been asked to do is to make a soft sculpture because we are making a soft sculpture in class. Clas makes everyday objects, including apple core. He likes to make sculptures that are soft. He is an inspiration to me because he shows commitment to his art, and he helps me think about how I can apply to creating my own piece.

Clas Oldenburg made the apple core in 1962. He used tinfoil, paper, and wheat paste.

Clas Oldenburg made the apple core in 1962. He used tinfoil, paper, and wheat paste.

This drawing shows an artist copying the apple core.

Oldenburg

Clas Oldenburg was a Swedish American soft sculpture artist. He was born January 28, 1929 - July 18, 2022. His theme is soft sculptures, version of everyday objects.

Oldenburg often said that he became an artist because he could draw and started making a lot of awareness of the sculptures possibilities for these things.

Pop art is normally displayed in 2-dimensional mediums. However, Clas work were made using three-dimensional paper, marks, soft fabric forms and plaster models.

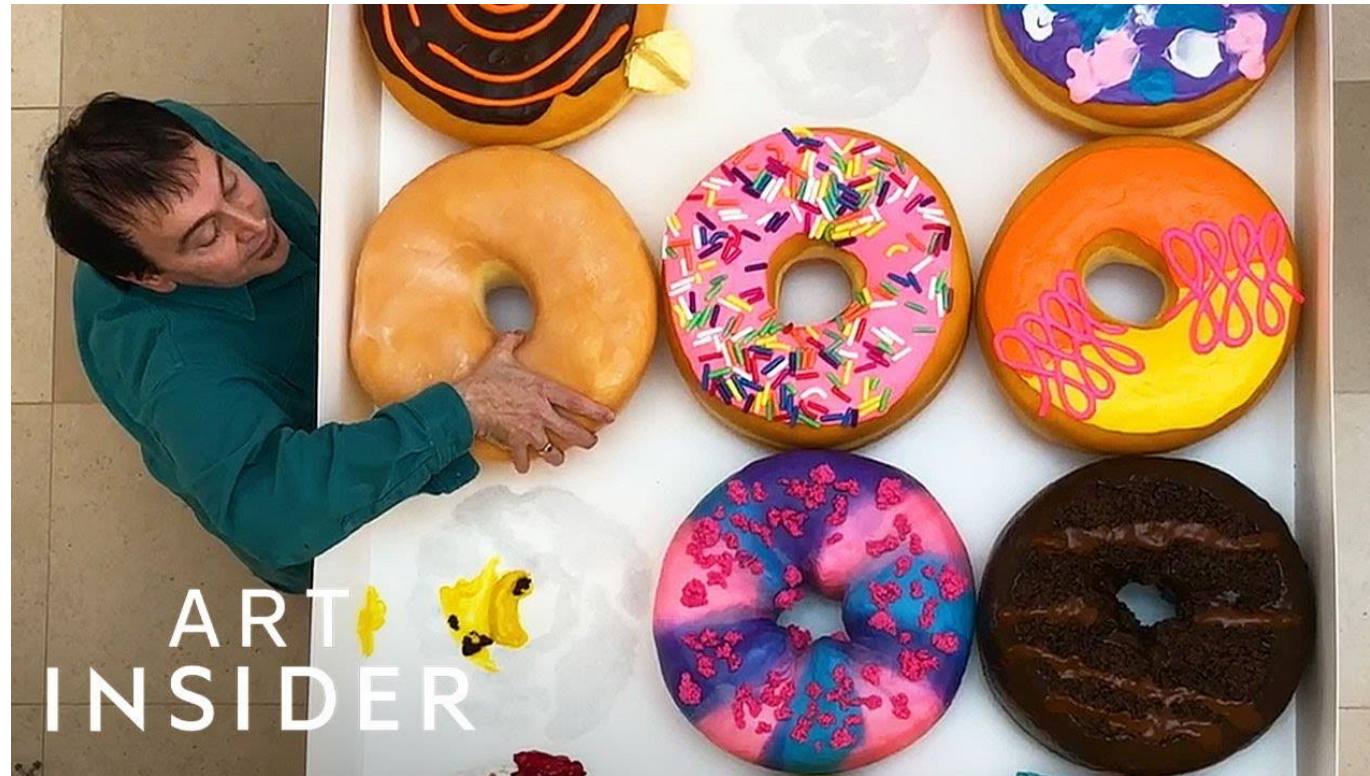
Here are some examples of his work:

Clas Oldenburg made the apple core in 1962.

Clas Oldenburg made the apple core in 1962.

CLAS

<https://www.youtube.com/watch?v=T7gD75HlkZ4>

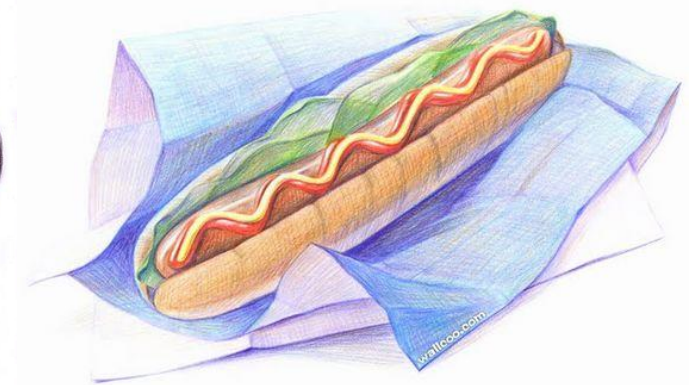


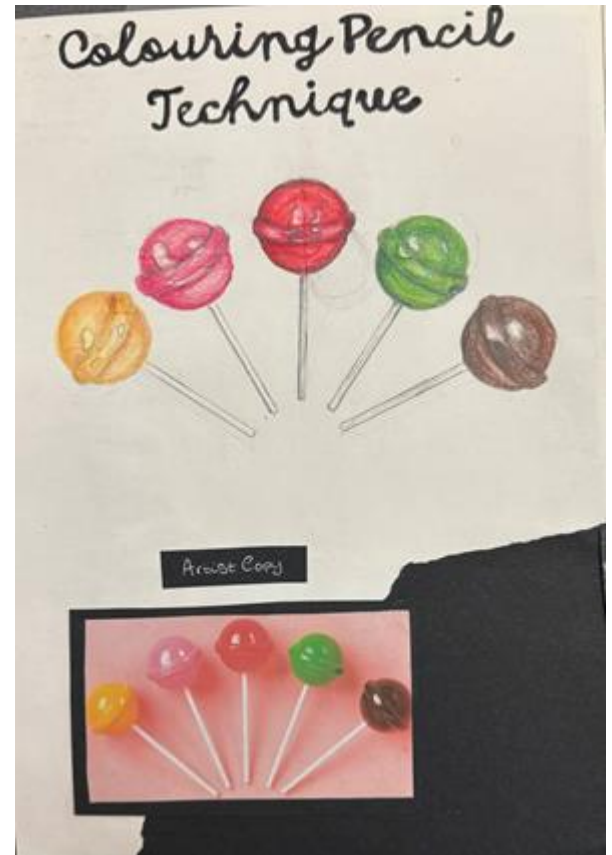
Task 5: Create an Observational Drawing

Coloured Pencil — select a food item
From your mind-map to draw

Your drawing should fill half of a sketchbook page and should be as detailed and accurate as possible.

- REMEMBER we are drawing from **observation**, you need to record the shape of the food with accuracy.
- Remember to layer your colours to create a cold bright colour. Layer your different shades to support you with blending.





Tips on how to produce quality pencil colour work

- Use a sharp pencil
- Draw the outline softly so you can't see the pencil lines through the colour
- Layer different colours to blend, mix and create the correct hue
- Apply detail over the top of a surface colour
- Apply the middle tones first, then the lighter ones and finally add the darkest tones



<https://www.youtube.com/watch?v=PE-iVjpbKm4>





Layering

Burnishing

Directional/contour lines

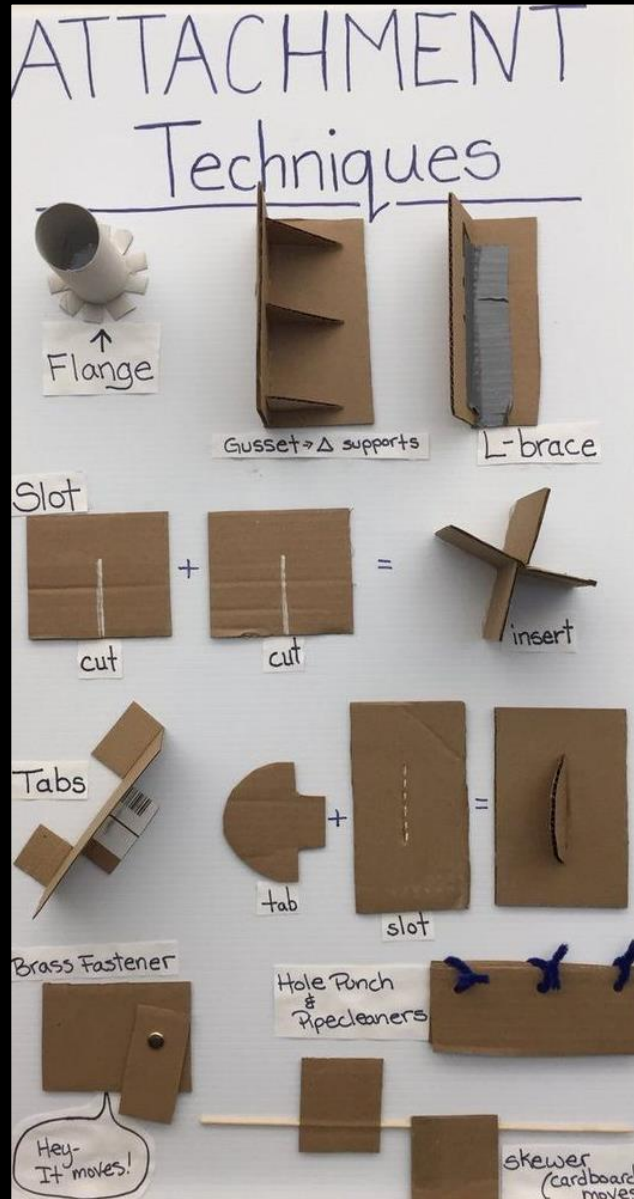


Task 6 – From your observational drawing make your 2D into a 3D

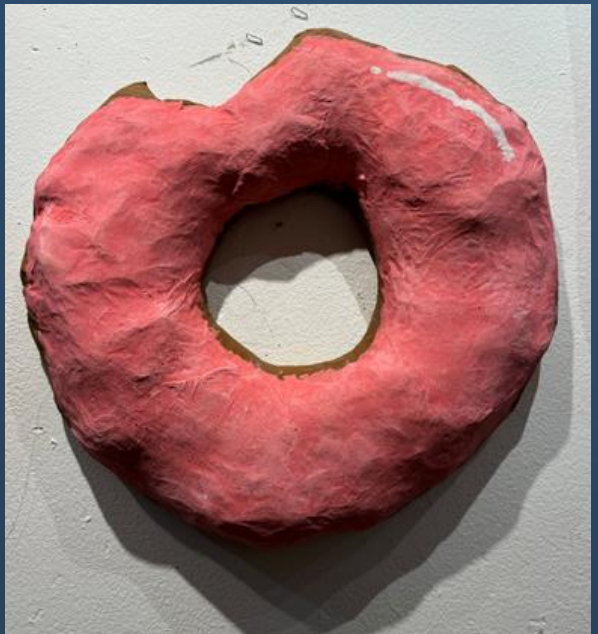
3D Making

Now that you have decided what you are going to make, you need to use recycled materials (e.g. cardboard, newspaper etc.) and create your own 3D sculpture inspired by the Artist and Art movement pop Art.

Construction Using Cardboard



Student examples



Term- 3-4 – Around the world

Task 1: Create 'Around the world' title page

Task 2: A country fact file – looking at their famous Architecture

Task 3: Paul Catherall Artist research

Task 4: What is Lino printing? Create a single page of research

Task 5: Create your own stamp design :

Task 1:

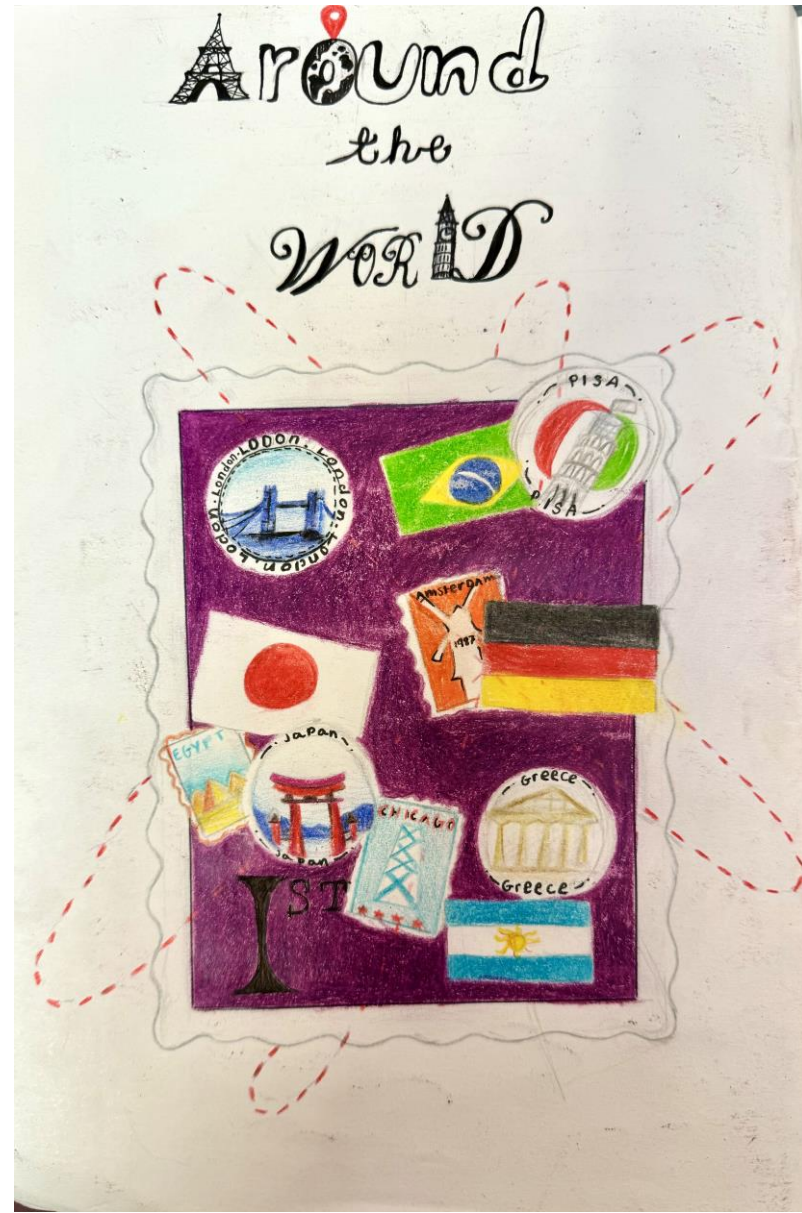
Around the world Title page:

Task

- Create a title page for 'Around the world'
- What comes to mind when you think of the theme above?
- Stamps, Letters, Travel, experiences, culture, race, ethnicity, values etc.

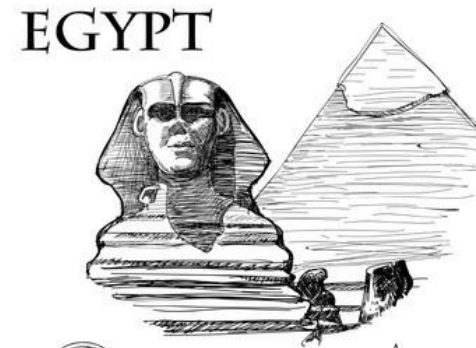


Student examples



Fact file – Select one of the following countries below and create a fact file page

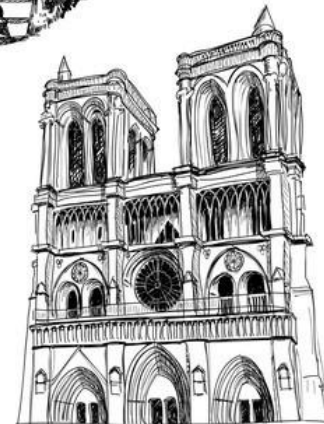
- Select one of the following cities below and create a fact file page about a country below and famous Architectural landmark.
- England eg. Big Ben
- Japan eg. Itsukushima Shrine
- France eg. Eiffel Tower
- Italy eg. Colosseum
- India Eg. Taj Mahal
- Egypt Eg. Pyramid of Djoser
- Dubai eg. Burj Al Arab
- Netherlands eg. Dutch windmill



PRAGUE



PISA

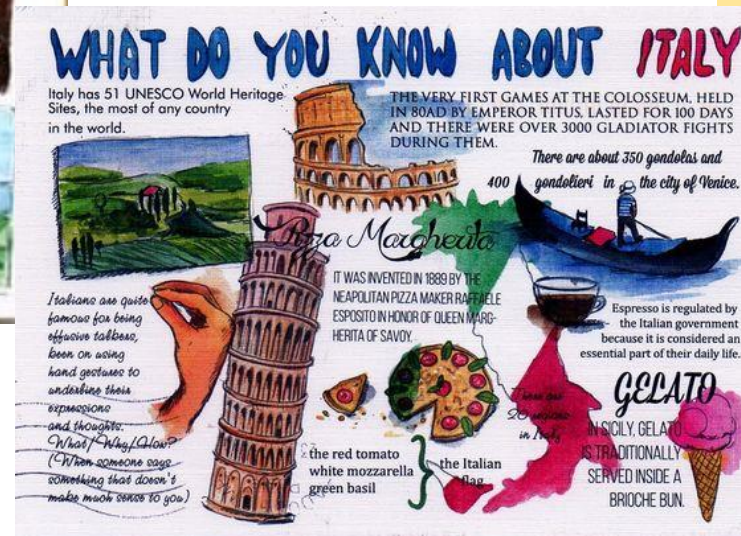


PARIS

Examples of what your fact page should look like

What to include:

1. Title – e.g.. England, Italy, Japan etc.
2. Facts about the country
3. Iconic Architectural landmarks – why are they famous – tell us about the history.
4. Lots of Drawings to back up your fact file.



In lesson you will read out loud your fun facts to share with the class



Student exemplar

What Do You

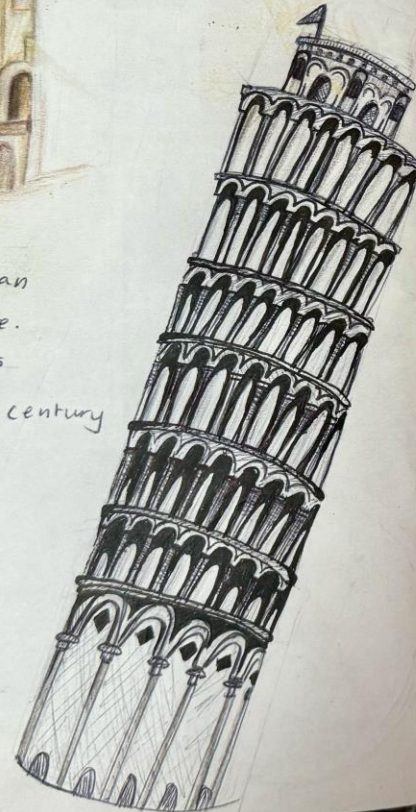
- Italy has 51 UNESCO world heritage sites, the most of any country in the world.

◦ Italy is also well known for its architecture, culture, opera, literature, film and fashion.



- Colosseum - an amphitheatre built in Rome under the Flavian emperors of the Roman Empire. Founded in 80 AD. However was stopped being used in the 6th century.

- The leaning tower of Pisa was constructed between 1173-1399. Even though it is leaning it wasn't originally however survived 4 earthquakes. It has over 800 years of history.



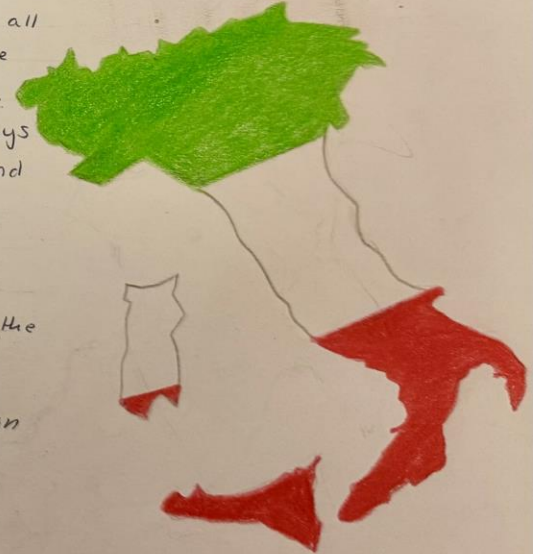
Know About Italy



- One of Italy's most famous/well known cuisines is pasta. Another meal invented in Italy is pizza, founded in the city of Naples. They haven't eaten it since 4th century B.C.



- One fact about Italy is all three of Europe's active volcanoes are in Italy.
- 13 of Shakespeare's plays were set in Italy, and Italy has over 3,000 museums.
- Leonardo da Vinci - thought to be one of the greatest painters. He was not only an Italian painter but a polymath, engineer.



Paul Catherall – Printmaking Artist



Task 3.

LO: To develop research skills - ARTIST PAGE (DOUBLE PAGE)

TASK: *Research the artist - Paul Catherall- and create a research page Use the information and keywords below to help you answer the questions...*

Did you know Career?

A printmaker specialises in creating artworks through printmaking techniques.. Printmakers employ various techniques, including etching, engraving, relief printing, screen printing, lithography, and more.

[About - Paul Catherall](http://www.paulcatherall.com/about/) – Follow this website www.paulcatherall.com/about/

KEYWORDS:

Architecture
Lino Print
Block colour
Implied Texture



QUESTIONS:

- What is the subject matter of Paul Catherall 's work?
- Describe how does Paul creates his artwork?
- How would you describe the colours? What materials does she use?
- Why do you think you were asked to look at this artist?

Extension Questions:

- What meaning/ mood to you think the work gives?
- Discuss the texture used?
- What is your opinion of the work?

Artist Research:

WHO?

Name
Date of birth
Nationality

WHAT

Describe one of the selected images by the artist.

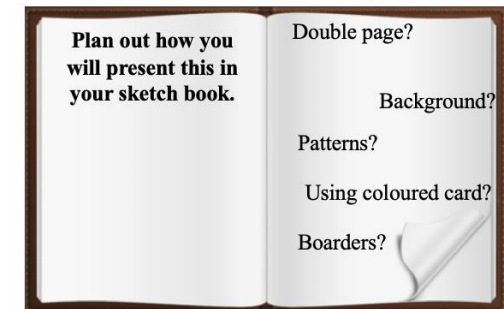
Artist Copy

HOW

How was the work made?

FONT: The best titles link visually to the artist you are looking at.

Choose one image to copy. Will you copy the whole image? Or a section? What are the best materials to use?



WHY

Why do you think you have been asked to look at this work in connection to your own project? Do they use similar materials or is it a similar theme?

WHAT IS LINO PRINTING?



In what other topic did you learn about the Art term 'Printmaking'? Think about the last year?



- Task: Create a single page research on what is a lino print.
- Explain what is and how you create one.
- Include an Artist that you found that creates lino prints.
- Add images to explain your points.



Task 5:

Stamp Designing – to send around the world

- With your country landmark image attached, create 3 variations of stamp designs you possibly could choose from using your architectural landscape. Eg. England
- Here you see 3 different designs for the same landmark Big Ben
- Make sure to fill up your A4 page with the 3 designs – and write which composition is most successful and why



Create a stamp Design: Before you begin your Lino you need to do your design preparation.

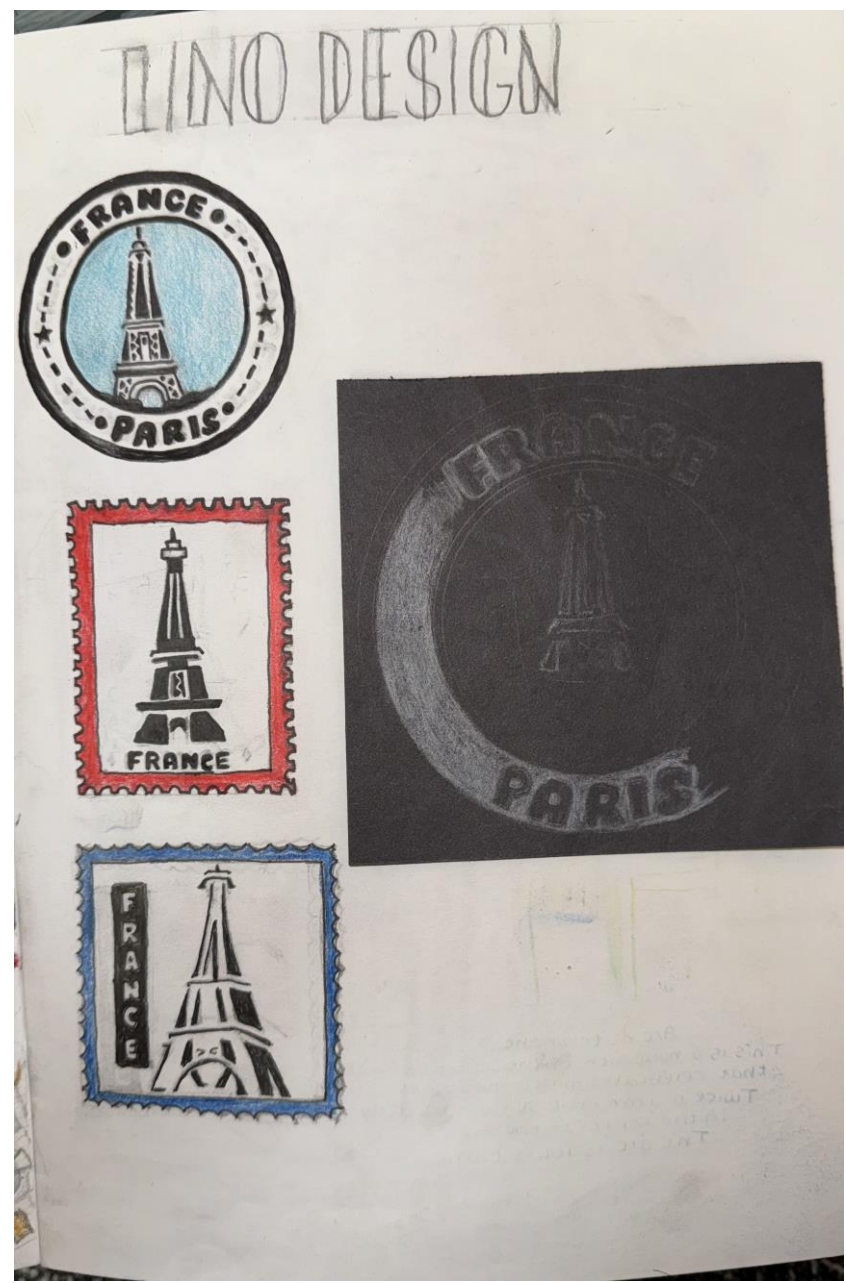
- Try to have a good contrast in your design. Have a variety of line, have thick and thin lines, and a variety of directions.
- When planning for your lino design, first plan your composition in black and white on the same sized page as your lino block.
- Make sure your composition appears visually balanced. Fill up your stamp
- Have Equal amounts of black (or colour) and white.
- Have a stamp boarder

N.B
Writing must be backwards on your lino if you are going to include it for it to come out right way around when you print

Example of backwards writing



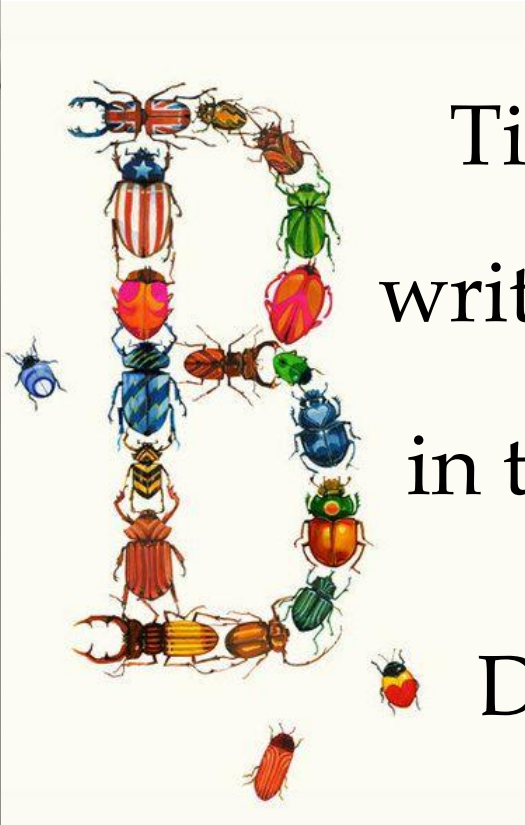
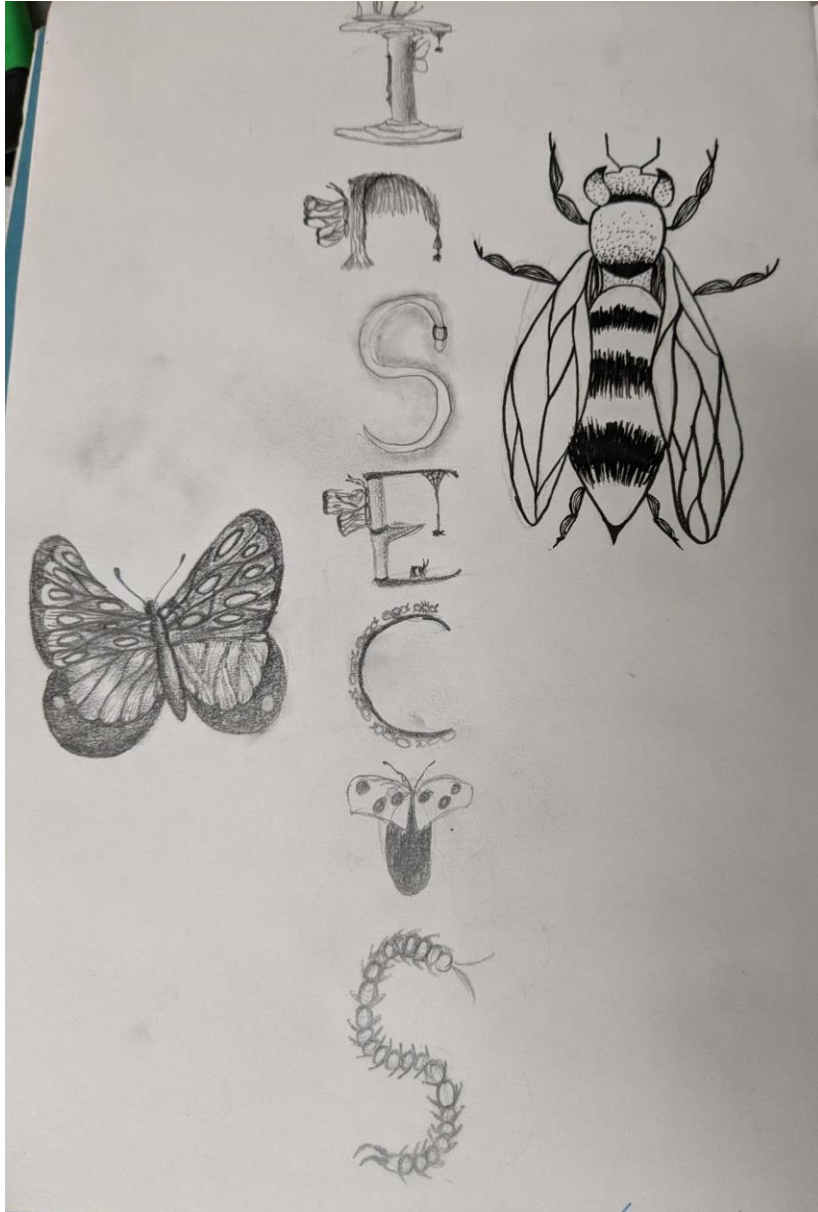
Student exemplar



Term 5-6- Insects

- Task 1: Title page – Insects
- Task 2: On title page add a tonal pencil bug drawing
- Task 3: On title page add a biro bug drawing
- Task 4: On title page add a colour pencil bug drawing
- Task 5: Artist research and Artist copy
- Task 5: Create you own Zentangle bug drawing

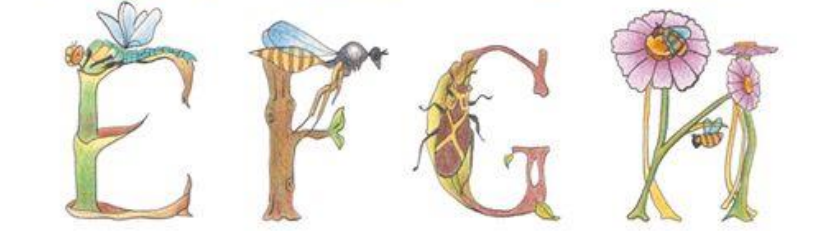
Task One:



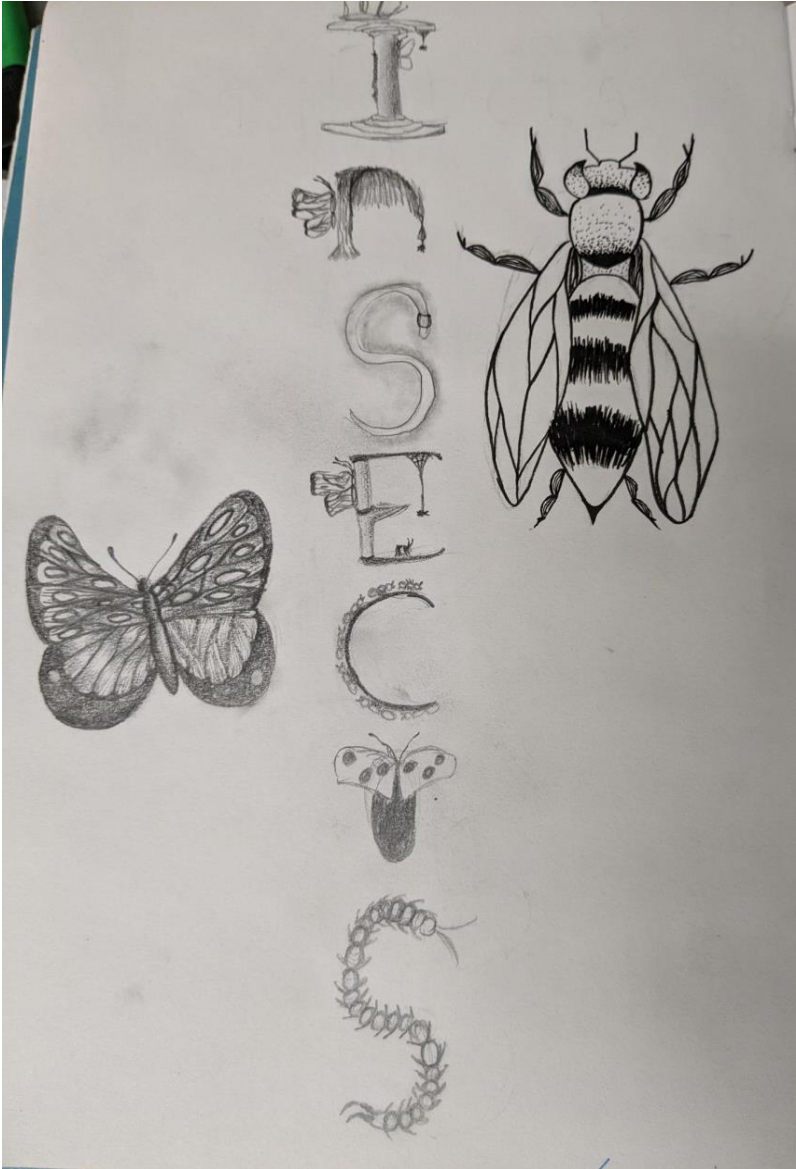
Title page: You are going to write the title 'INSECTS' in the middle, top or bottom of your page
Draw this lightly in pencil.

The task is to make a **creative font using insects.**

Look at the resources for inspiration!

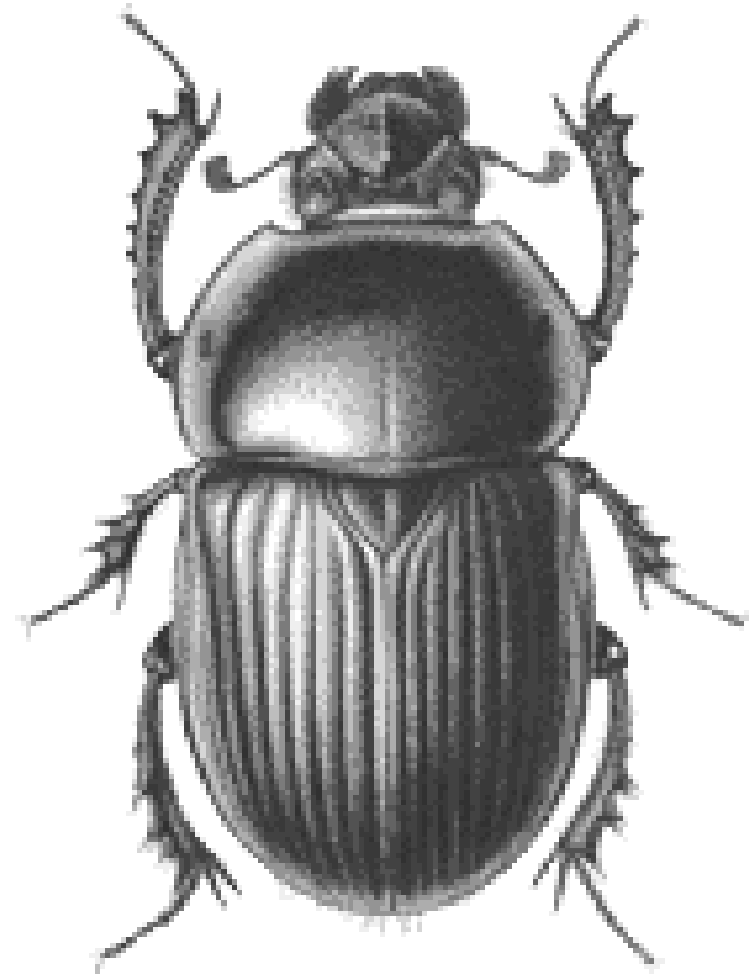


Student example



Task 2

- Add an observational pencil drawing of bug onto your title page.
- Use image attached to this slide

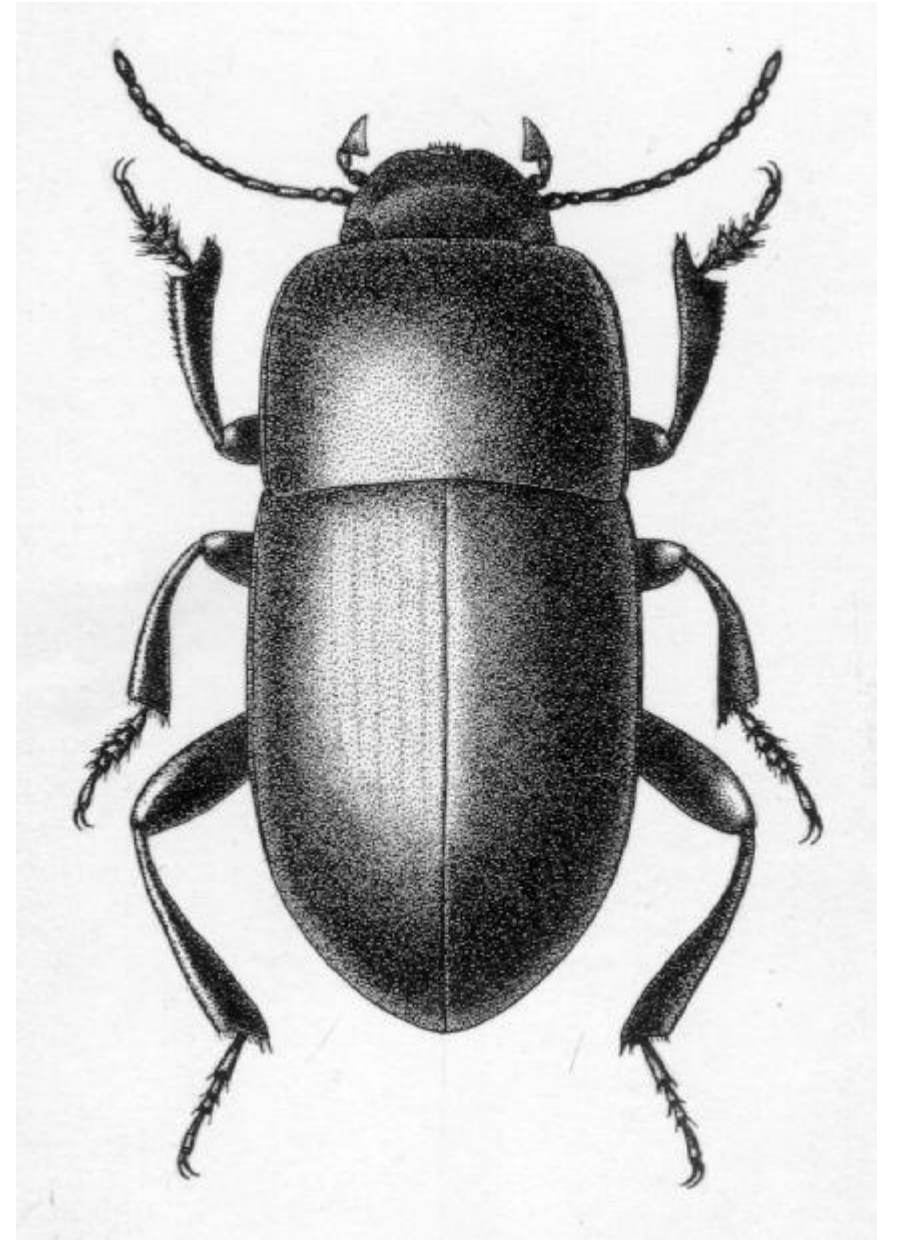


Task 3

- Add an observational biro drawing of bug onto your title page.
- Use image attached to this slide
- You can try the stippling technique – watch this video to help support your learning

[Stippling - drawing a beetle with dots \(youtube.com\)](https://www.youtube.com/watch?v=GgL4DjlzCxs)

<https://www.youtube.com/watch?v=GgL4DjlzCxs>



Task 4

- Add an observational colour pencil drawing of bug onto your title page.
- Use image attached to this slide
- You can watch this video to help support your learning

[Drawing with Markers and Colored Pencils - Beetle Illustration \(youtube.com\)](https://www.youtube.com/watch?v=4HPv5nFWNy8&t=322s)

<https://www.youtube.com/watch?v=4HPv5nFWNy8&t=322s>



Task 5.

LO: To develop research skills - ARTIST PAGE (DOUBLE PAGE)

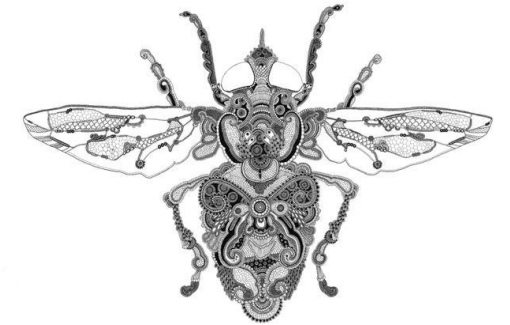
TASK: *Research the artist - Rosalind Monks- and create a research page Use the information and keywords below to help you answer the questions...*

Did you know Career? Scientific illustrator

Scientific illustration is more than just artwork. It is a way to communicate complex concepts, details, and subjects in an engaging and easily comprehensible way. Artwork can go beyond the complex language often used to describe scientific topics and allow for a greater understanding of the subject.

KEYWORDS:

Implied Texture
Pattern
Zentangle
Detail



QUESTIONS:

- What is the subject matter of Rosalind monk 's work?
- Describe how does Monks creates her artwork?
- How would you describe the marks? What materials does she use?
- Why do you think you were asked to look at this artist?

Extension Questions:

- What meaning/ mood to you think the work gives?
- Discuss the texture used?
- What is your opinion of the work?

Artist Research:

WHO?

Name
Date of birth
Nationality

WHAT

Describe one of the selected images by the artist.

Artist Copy

HOW

How was the work made?

FONT: The best titles link visually to the artist you are looking at.

Plan out how you will present this in your sketch book.

Double page?

Background?

Patterns?

Using coloured card?

Boards?

WHY

Why do you think you have been asked to look at this work in connection to your own project? Do they use similar materials or is it a similar theme?

Choose one image to copy. Will you copy the whole image? Or a section? What are the best materials to use?

Task 6: Create your own Zentangle insect design

- Task: Being inspired by the Artist Rosalind Monks create your own inspired Zentangle bug.
- Use this video link to help with your learning. [Pen artwork | Doodle | Zentangle Doodle Art | Draw insects using pen. \(youtube.com\)](https://www.youtube.com/watch?v=XRXZ_BgbFvc)
https://www.youtube.com/watch?v=XRXZ_BgbFvc

