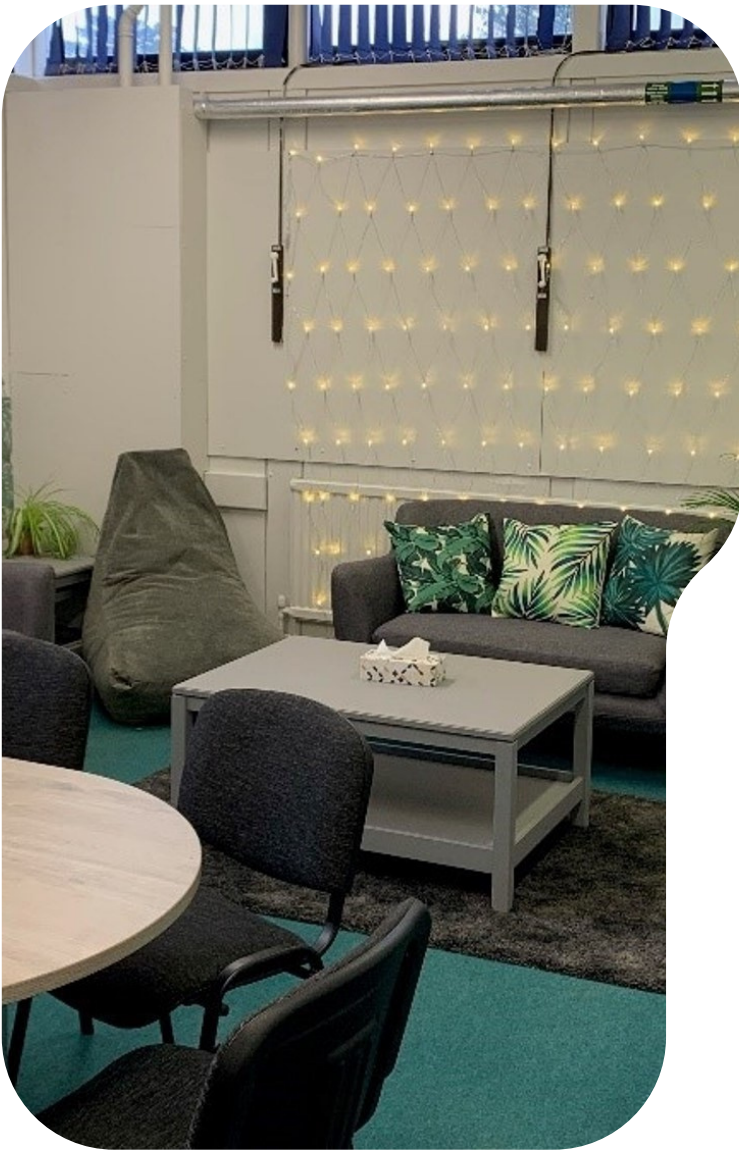




Inspiring Futures Fund

The *Inspiring Futures Fund* is maintained by voluntary contributions from parents. It provides vital additional funds to invest in our facilities and educational resources, for the benefit of all our students.

Newlands Girls' School



Past Investments

A Welcoming Reception

Improving the school environment was a key priority last year, with a focus on celebrating the achievements of our students. Our Reception area has been redecorated, with canvas prints showcasing our students and their many talents. We would love to extend this to the rest of the school!

Our Wellbeing Hub

We have transformed a small classroom into a dedicated Wellbeing Hub, which is now used for individual and group sessions with students, and hosts a number of clubs and societies. It is the perfect place to go if students need extra pastoral support.



Plans For This Year



Classroom Refurbishments

One of our ambitions is to renovate 29 classrooms to the highest standard possible. Each classroom requires £3,000 in order to upgrade the IT infrastructure, equipment and learning environment to a sector-leading standard.



Sixth Form Refurbishments

The Sixth Form at Newlands is thriving, and we want to continue to improve our facilities for the students. The new Brewhouse Café was installed in the Sixth Form Centre last year, so now we would like to enhance the common areas used by students. Investment of approximately £5,000 would transform both our inside and outside facilities.



Minibus Maintenance

We have two minibuses which cost approximately £10,000 per year to maintain. The buses are used everyday and are vital for taking students on educational outings, to sporting fixtures, for enrichment opportunities, and to facilitate our Sixth Form consortium arrangements.

How To Support US

The *Inspiring Futures Fund* is supported through voluntary contributions from parents: all funds go directly to enhancing students' experience during their time at Newlands.

We have continued to thrive despite the budgetary pressures currently faced by all schools: we have effectively managed our budget by controlling costs and improving efficiency. Our ability to build on the immense progress we have made, however, is contingent on raising additional funds.

We ask all parents to make a regular donation each month to help us maintain, strengthen and invest in the rich learning journey that we, as a school, have embarked upon with your daughter.

Our development plans for the year are expected to cost in the region of £100,000. With your support we can achieve this target: if the parents of every student were to make a monthly £10 contribution to the fund, we could cover the costs of the plans outlined above. What a difference that would make!

You can make a regular donation by setting up a standing order.

A copy of the Standing Order Mandate Form accompanies this leaflet, or can be downloaded from the website. Please return your completed form to Mrs H. Braver, PA to the Headteacher.

If you would rather set up a standing order with your bank directly, please use the following details:

Account name: Newlands Girls' School
Lloyds Bank
Sort code: 30 95 36
Account number: 59639368

If you have any question please contact Mrs K. Foreman, our School Business Manager, on 01628 625068.

